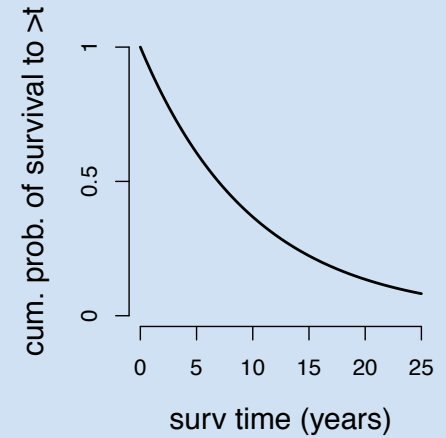
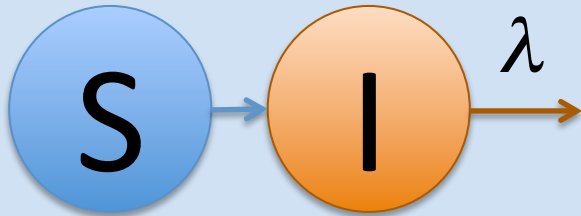


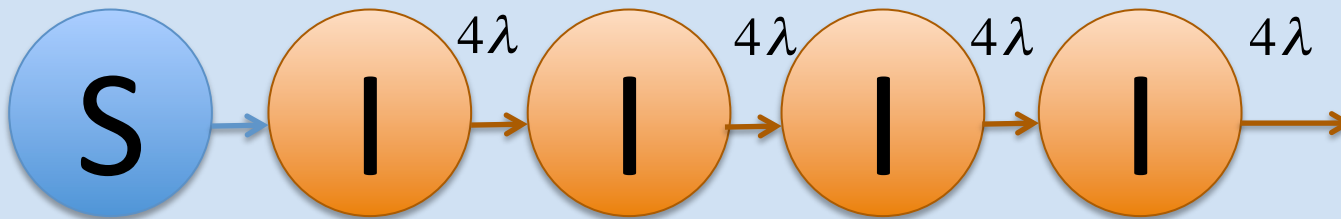
Justification of the Distributed Delay (Boxcar Model)

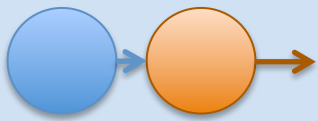
Exponential survival:



Gamma survival:

Average rate is the same, distribution is different!

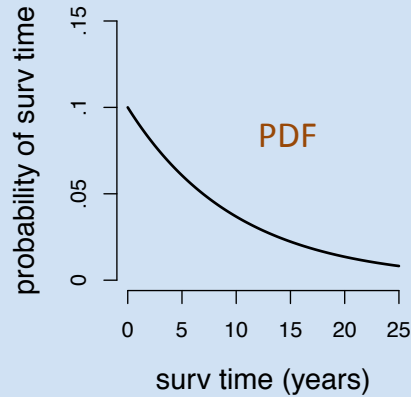




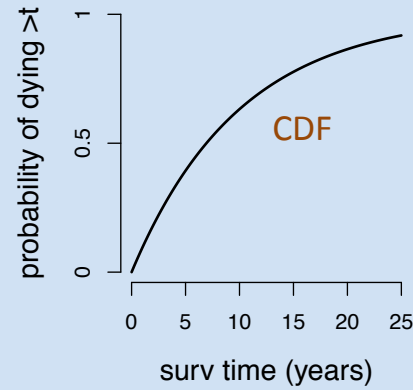
Exponential Survival Times



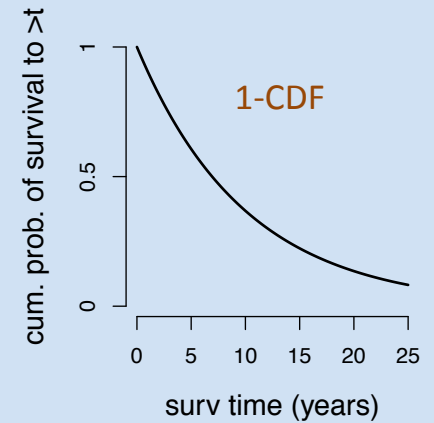
hazard of mortality:
deaths / (person*year)



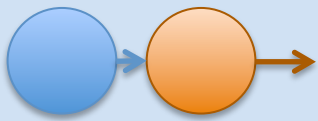
probability of
dying **AT** year t



probability of
dying **BY** year t



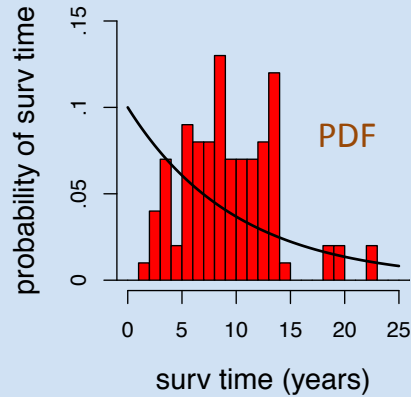
probability of
surviving **PAST** year t



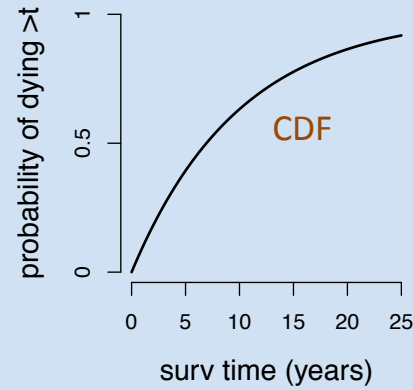
Exponential Survival Times



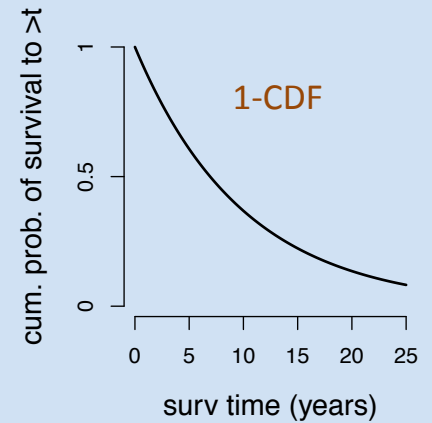
hazard of mortality:
deaths / (person*year)



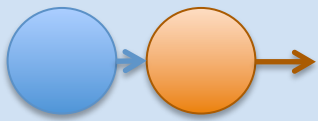
probability of
dying AT year t



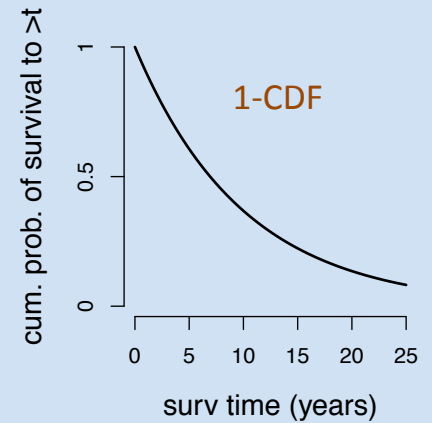
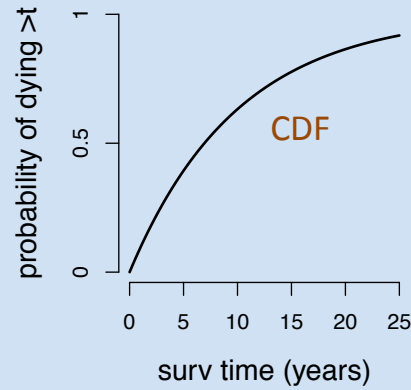
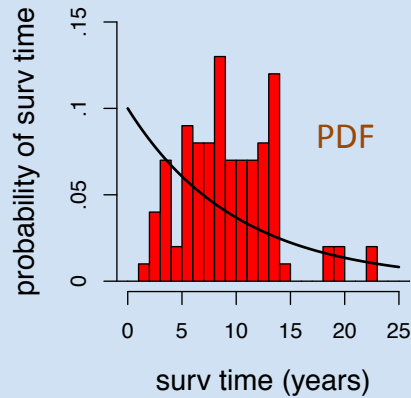
probability of
dying BY year t



probability of
surviving PAST year t



Exponential Survival Times



hazard of mortality:
deaths / (person*year)

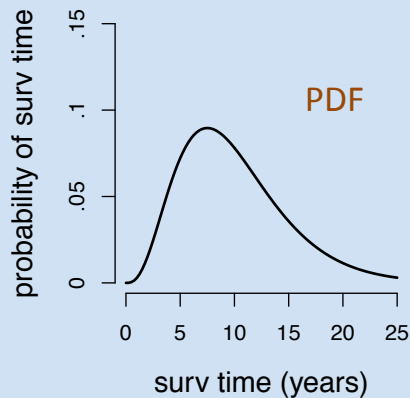
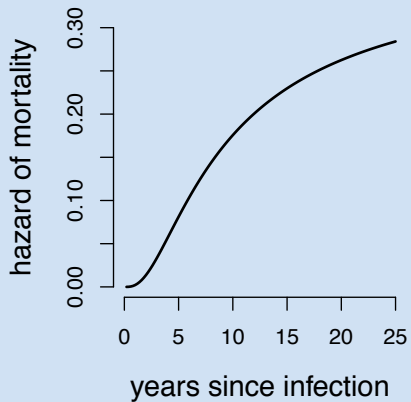
probability of dying
AT year t

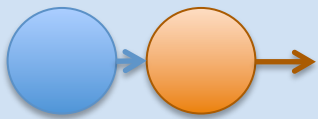
probability of dying
BY year t

probability of surviving
PAST year t

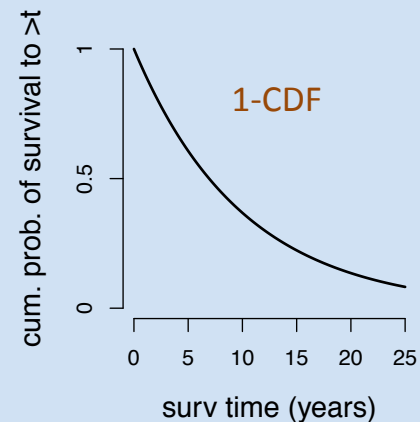
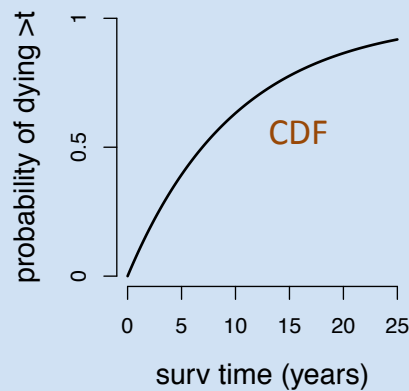
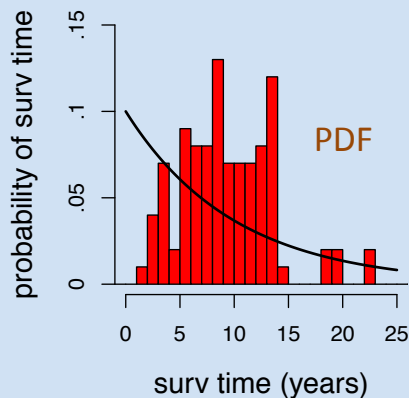


Gamma Survival Times





Exponential Survival Times



hazard of mortality:
deaths / (person*year)

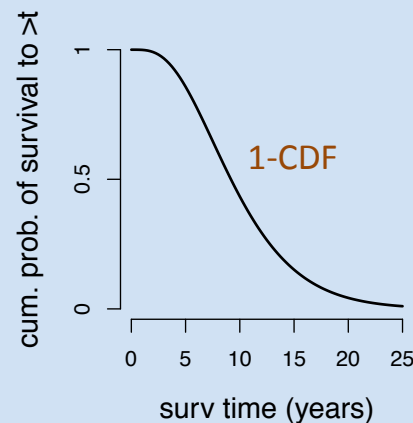
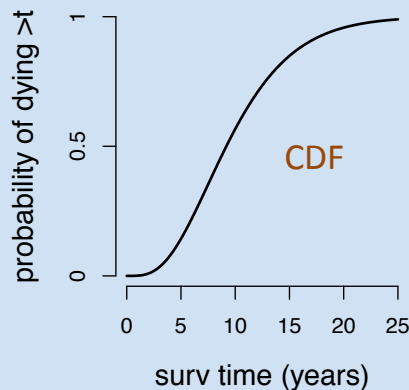
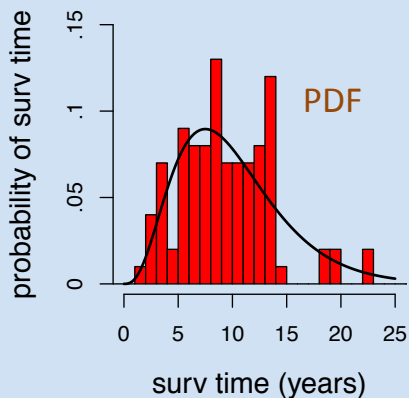
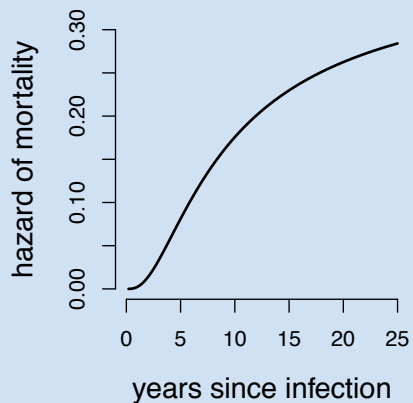
probability of dying
AT year t

probability of dying
BY year t

probability of surviving
PAST year t



Gamma Survival Times





SOME RIGHTS RESERVED

This presentation is made available through a Creative Commons Attribution-Noncommercial license. Details of the license and permitted uses are available at <http://creativecommons.org/licenses/by-nc/3.0/>

© 2013-2016 Steve Bellan. Meaningful Modeling of Epidemiological Data Clinic

Title: Distributed Delay and Box Car Models

Attribution: Steve Bellan, Clinic on the Meaningful Modeling of Epidemiological Data

Source URL: <http://ici3d.org>

For further information please contact Steve Bellan (steve.bellan@gmail.com)

